

LEAD COUNTER WEIGHT
INSTALLATION INSTRUCTIONS

NOTE: Please read these instructions carefully before starting. This work may prove to be more difficult than it at first appears. Therefore, we recommend that it be done by experienced marine service personnel.

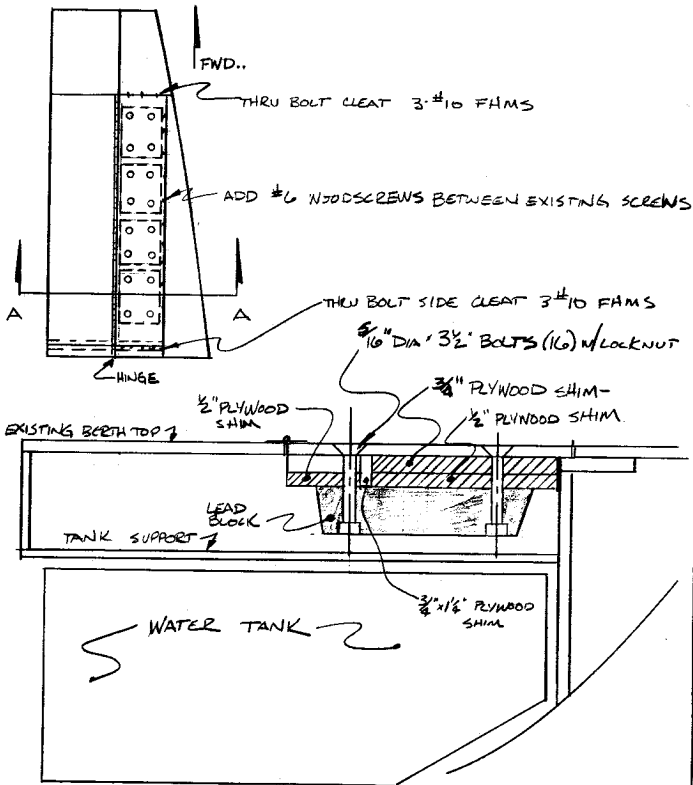
PARTS LIST:

QTY	
4	60 lb. lead weights pre-drilled and counterbored (1" dia.) for 5/16 bolts and nuts
16	5/16" x 3-1/2" flathead stainless steel bolts w-5/16 flat washer and aviation style locknut.
1	1/2" x 3" x 45-3/8" mahogany plywood shim
1	1/2" x 5" x 45-3/8" mahogany plywood shim
1	3/4" x 5" x 45-3/8" marine plywood shim
1	3/4" x 1-1/4" x 45-3/8" marine plywood shim
3	#10 x 1-1/2" FHMS w/washers and locknuts
3	#10 x 2-1/2" FHMS w/washers and locknuts
10	#6 x 1" FHWS stainless steel
20	#8 x 1" FHWS stainless steel
10	#8 x 1-1/2" FHWS stainless steel

Ballast installation sketch S-32 Classic

1. Remove the starboard berthtop water tank cover (fixed and hinged sections). Remove the hinge section from the fixed section to facilitate handling. Remove berthtop support blocks above the water tank stiffeners.
2. Screw and glue the 3/4 x 1-1/4" spacer against the existing cleat. Screw and glue the 1/2" x 3" plus 1/2" x 5" mahogany cleats and the 3/4 x 5" plywood cleats to the bottom of the fixed section with #8 FHWS.
3. Install additional thru bolts through cleats on each end part 7 aft end part 8 forward cleats where the fixed cover seats.

STARBOARD M.C. BERTH



SECTION A-A
ENLARGED

Sabre

S-32
BALLAST INSTALLATION

SCALE
NONE

DATE
7-16-85

BY
TON

APPVD.

DWG. NO.

4. Position lead weights as far outboard as possible on the bottom of the fixed section. Mark holes, drill and countersink for 5/16" diameter flathead bolts on the berthtop side.
5. Install lead weights on cover with 5/16 flathead bolts. Do not over-tighten, damage to the berthtop will occur. Install nuts and washers in counterbored area.
6. Carefully lower fixed cover onto berthtop and install extra screws to outboard cleats.
7. Refasten hinged portion of cover.