

INSTALLATION INSTRUCTIONS

June 7, 1976

Three 65 pound lead counter weights have been shipped to you under separate cover. We suggest that you use the following procedure to install these weights.

1. Remove the sliding berth.
2. Place appropriate template on the berth top over proper compartment. Then align template with edge of compartment opening as shown.
3. Using a center punch, make a mark at the center of the crossed lines shown on the template. Drill  $\frac{1}{2}$ " holes and countersink only enough to set screw heads level with berth surface. Mount weights below the berth top and draw up tightly. Do not over tighten as the screw head can be drawn down thru the berth top.

NOTE: The aft bolts of forward weight position in forward compartment need  $\frac{1}{2}$ " spacer blocks, supplied, to compensate for cleat under forward section of berth.

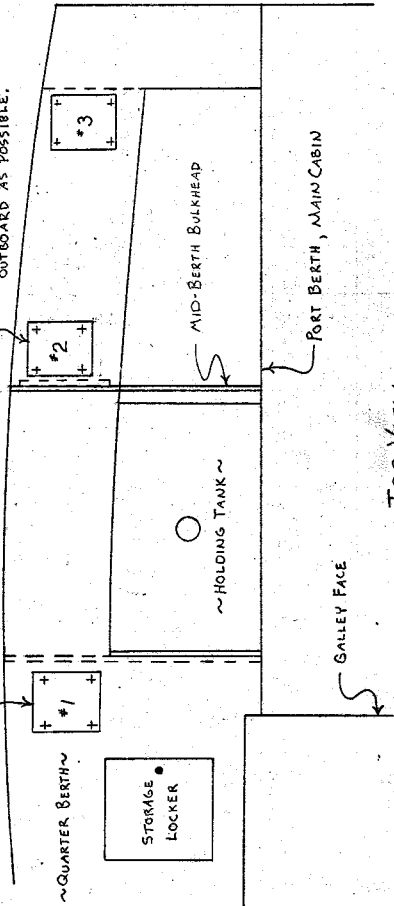
PARTS LIST

- 3 - 65 lb weights
- 12 - 4" x  $\frac{1}{2}$ " F.H. bolts
- 12 -  $\frac{1}{2}$ " washers
- 12 -  $\frac{1}{2}$ " nuts
- 2 - 3" x 3" x  $\frac{1}{2}$ " spacers

Please do not hesitate to contact us if we can be of further assistance in this regard.

INSTALL ONE 60 LB. LEAD WEIGHT  
AS CLOSE TO BULKHEAD AND  
AS FAR OUTBOARD AS POSSIBLE.

INSTALL ONE 60 LB. LEAD WEIGHT AS  
CLOSE TO BULKHEAD AND AS FAR  
OUTBOARD AS POSSIBLE.



TOP VIEW

- NOTES:**
- 1) USE POSITIONS #1 AND #2 WHEN INSTALLING 2 LEAD WEIGHTS.
  - 2) USE POSITION #3 ONLY WHEN A THIRD LEAD WEIGHT IS REQUIRED.

S-28 TRIMMING		SCALE: NONE
BALLAST LOCATION		DATE: 23 OCT 78
<b>Sabre Yachts</b> DESIGNERS & BUILDERS		BY: G.W.   REV'D: BJA
80, CASCO, MAINE		DWG NO: 781023-1