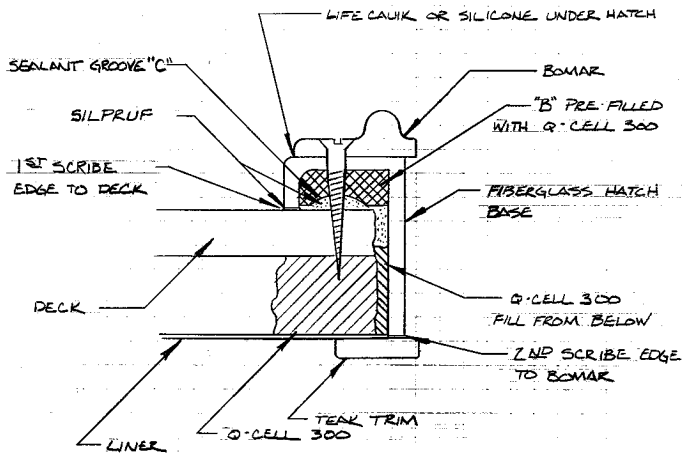


SABRE YACHTS
SABRE 28 BOMAR HATCH INSTALLATION INSTRUCTIONS

CAUTION: Please read these instructions carefully before starting work. This work may prove to be more difficult than it first appears. Therefore, we recommend that it be done by experienced marine service personnel.

1. Position the hatch cutout template (brown paper included with kit) on the cabin top by using the center seam in non-skid as a center-line.
2. Measure from the edge of the non-skid aft of the mast step to the edge of the non-skid forward of sliding hatch to find the fore/aft center of the opening.
3. Mark the hatch cutout with 1/8" clearance on all sides (note: when cutting out the opening be careful not to cut the wire running to the mast step between the liner and deck, indicated by dotted line on drawing #1).
4. Using C-clamps or double layers of masking tape, adjust the size of the gap between deck and liner to be an even thickness from side to side. If the gap is 1½" at the aft port edge it should be the same at the aft starboard edge (there will be some variation at the center due to the curve in the liner). Making the gap as even as possible will make trimming out at the liner much easier.
5. Fill the gap between the deck and liner going in at least 1½" with resin catalyzed and thickened with Q-cell 300 to a consistency of putty which will stay in place and not run. 1½ quarts of resin mixed with filler will be sufficient.
6. Drop the pre-assembled hatch base into position and scribe it to the cabin top contour (when the top edge fits flush to the deck, scribe the bottom inside to the liner edge).
7. With the hatch base unit upside down, mix ½ quart of resin with catalyst and filler to the desired consistency. Fill the void between the inner and outer flanges of the hatch base (this is shown in diagram #2 "B"). Make sure not to overflow as this would prevent the base from sitting flush on the deck. While this filler is still pliable, make a sealant groove (c) using an old pencil in the center of the filler. Allow this to set up. This will take approximately ½ quart of resin.



Sabre

SABRE 28
 BOMAR MID-HATCH INSTALLATION
 DRAWING NO. 2

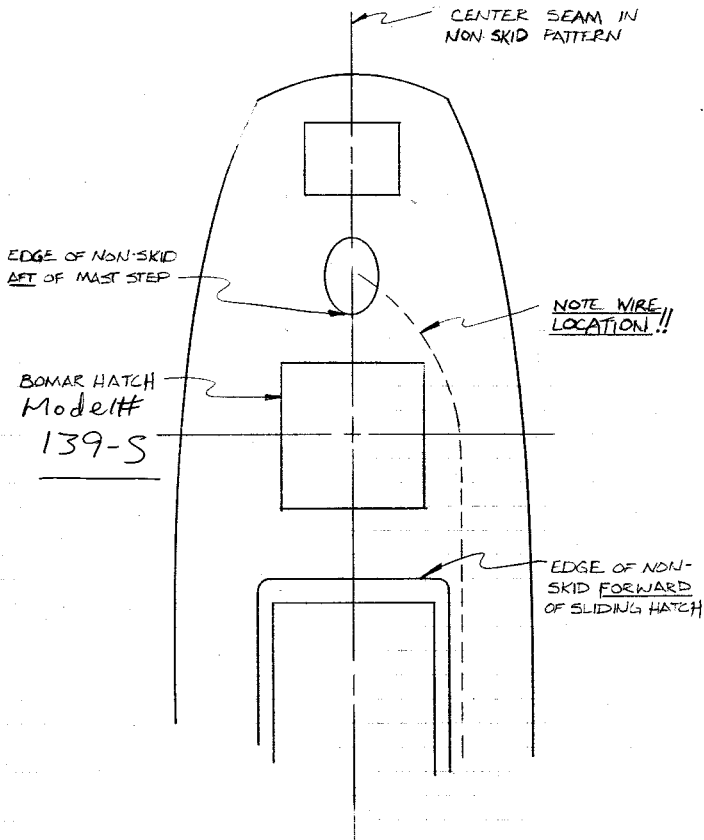
SCALE
 NONE

DATE
 4-4-84

BY
 T.P.

APPVD.

DWG. NO.



Sabre

SABRE 28
BOMAR MID-HATCH INSTALLATION
DRAWING NO. 1

SCALE NONE	DATE 4-4-84
BY TJC	APPVD. DWG. NO.

SABRE YACHTS

SABRE 28 BOMAR HATCH INSTALLATION INSTRUCTIONS (CONT'D.)

8. With the insert ready, fill the sealant groove on the insert with the silpruf sealant provided (use enough so that it will fill the area between the deck and hatch base).
9. The Bomar hatch can now be installed using silpruf sealant. Drill thru the base and into the deck using the stainless steel screws provided.
10. Any voids between the liner and bottom edge of the insert can be filled with a mixture of resin and Q-cell 300.
11. Teak trim can be installed at the liner with 1/16" overhang into the opening. The trim is attached with silicone bronze screws provided. A small bead of silicone should be applied at this overhang.
12. Velcro has been provided for the screen. This can be "super" glued on to the liner around the outside edge of the teak trim.

Bomar - charlestown, NH (603) 826 5799

603-826-5794