

SABRE YACHTS  
SABRE 28 HOLDING TANK  
INSTALLATION INSTRUCTIONS

May 1, 1978

NOTE: Read these instructions carefully before starting work. This installation may prove to be more difficult than it at first appears. Therefore, we recommend that it be done by experienced marine service personnel.

These instructions cover the installation of the new style plastic holding tank only. When replacing an existing fiberglass tank with the new style, the existing tank must first be removed, and the instructions followed from there.

1. Remove the sliding berth top section from the port berth.
2. Remove the berth top section indicated in Fig. #1 by cutting along the dotted lines shown. A neat cut should be made to allow re-installation of this piece after final installation of the holding tank.
3. Remove "Bulkhead A" indicated in Fig. #1.
4. Install the 3 PVC fittings supplied with the holding tank.  
WARNING: Fittings should be installed  $\frac{1}{2}$  to 1 turn past hand tight only. Overtightening these fittings can crack the tank.
5. Check the holding tank for fit by installing it in the position indicated in Fig. #2. The tank should fit squarely on the hull and be below the level of the berth top. It must also allow for re-installation of the section removed in Step 2 and not interfere with the operation of the sliding berth top.
6. With the tank still in position, mark the location for the 3 wedges shown in Fig. #2. These prevent the tank from moving sideways.
7. Remove the tank.
8. Install the 3 wedges using a fiberglass putty mixture.
9. Install "Bulkhead B", Fig. #2, by fiberglassing it to the hull and fastening down from the berth top. All paint and varnish must be removed from fiberglassing surfaces to provide proper adhesion.
10. Install cleats 1, 2 and 3 indicated in Fig. #2.
11. Fasten cleats 4 and 5 ( $\frac{3}{4}$ " x  $1\frac{1}{2}$ " x 10") to the bottom of the berth top section in the positions indicated. These cleats prevent up and down movement of the tank and may require some modification to rest on the top of the tank properly.
12. Set the holding tank in place.

(cont'd next page)

KRACOR Tank #2-5091



Inspection  
Port

36"

3330521

-Outlets  
(3) 1.5"  
(1) 1"



11"

23"

Sabre 28 Holding Tank (for portside berth, main cabin)

# PORT BERTH

M-28

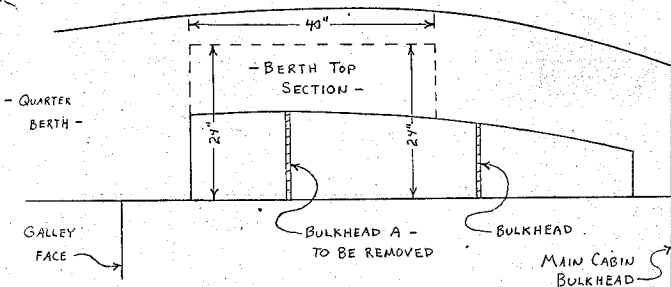


FIG. 1

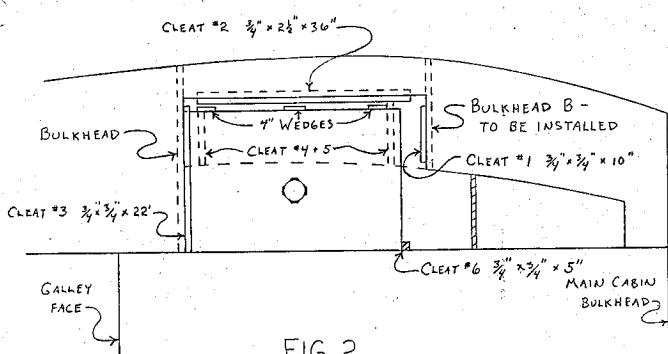


FIG. 2

S-28 KRACOR HOLDING TANK INSTALLATION		SCALE: NONE	
<i>Subre Yachts</i>		DATE: 27 Apr 78	
BY: 6W		APVD: ROR	
		DWG NO: 780427-1	

SABRE YACHTS  
SABRE 28 HOLDING TANK  
INSTALLATION INSTRUCTIONS

Page 2  
May 1, 1978

13. Check the fit of the 2 cleats installed in Step 11 and fasten the berth top section in place.
14. Drill one 2" diameter hole and one 1" diameter hole from the forward most compartment of the port berth, through the main cabin bulkhead, into the hanging locker.
15. Drill one 2" diameter hole through the main cabin bulkhead into the head compartment as close to the hanging locker partition and head platform floor as possible.
16. Drill one 3/4" diameter hole through the hull from the hanging locker for the 5/8" vent thru-hull. This hole should be as close to the headliner and as far aft as possible in the hanging locker.
17. The hole required for the deck plate is 2 1/4" diameter. This should be approximately 4 1/2" in from the inside of the hull and 2" forward of the aft hanging locker bulkhead.
18. Connect one end of the 9' length of vinyl hose to the bottom fitting on the holding tank. Clamp the hose along the bottom of the berth face with the clamps provided. Run the hose through the 2" hole into the hanging locker and connect it to the deck fitting. Follow the same procedure with the vent and head discharge hoses. These 2 hoses should be clamped as high as possible along the berth face, with the vent hose the higher of the two.

NOTE: Use a good quality pipe dope on all hose connections.