

SABRE YACHTS
BOARDING LADDER KIT
INSTALLATION INSTRUCTIONS

For boats with step through rail and transom step. 1984 model and newer.

To order ladder contact: topsinquality.com

Note: Read these instructions carefully before starting work.

This installation may prove to be more difficult than it at first appears. Therefore, we recommend that it be done by experienced marine service personnel.

This kit includes:

- 1 - Boarding ladder.
- 4 - Plywood blocks, $\frac{1}{2}$ " x 4" x 4"
- 12 - $\frac{1}{4}$ x 20, 2 $\frac{1}{2}$ " round head machine screws with washers and nuts.
- 1 - Transom step.

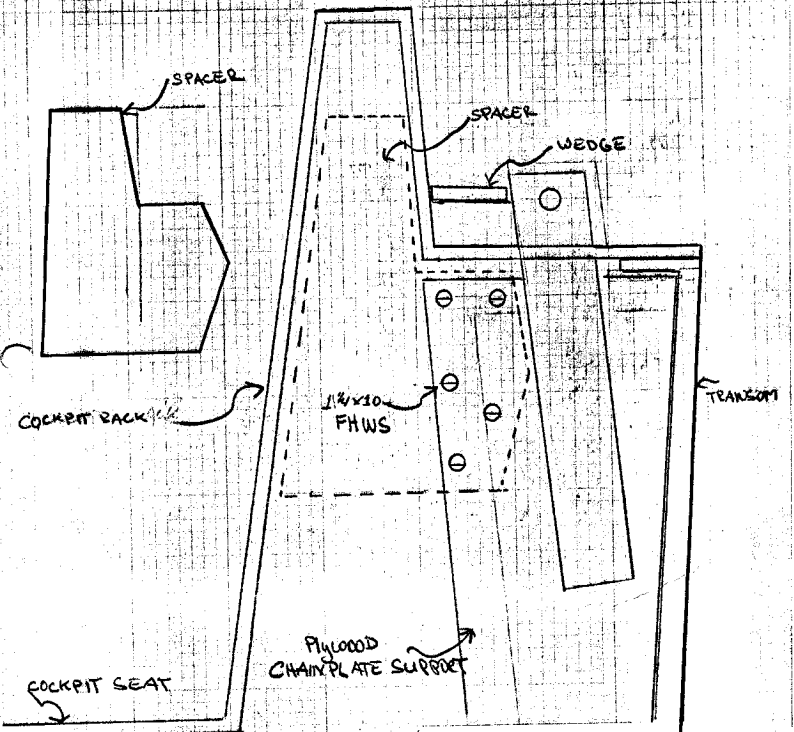
Instructions:

1. The top rung of the ladder, when in the up position, is placed even with the top of the stern rail. (Tape or tie the ladder to the stern rail to facilitate marking the fastening holes.)
2. The ladder is centered on the transom. Mark the mounting holes.
3. The two plywood blocks are fiberglassed inside the transom to spread the load of the mounting bases.
4. The bases of the ladder are bolted through the transom and the plywood blocks.
5. When the ladder has been fastened to the transom, adjust the extension legs for proper operation. They should be positioned to hit the transom as low as possible when the ladder is in the down position. Position the center line of the transom step flange below the bottom edge of the teak toerail, as listed below, noted as dimension "A" for each model.

	S-28	S-30	S-32	S-34	S-38
"A"	4 $\frac{3}{4}$ "	5 $\frac{1}{2}$ "		6 $\frac{1}{2}$ "	12"

Adjust up or down if required to clear the boarding ladder steps and center within the boarding ladder side rails.

Attach the step as indicated in steps 2 and 3. Note - remove any paint before fiberglassing.



Sabre Yachts SO. CASCO, MAINE	SCALE: NONE
	DATE: 10/24/77
	BY: W.M. APVD:
	DWG NO: 7/0-24