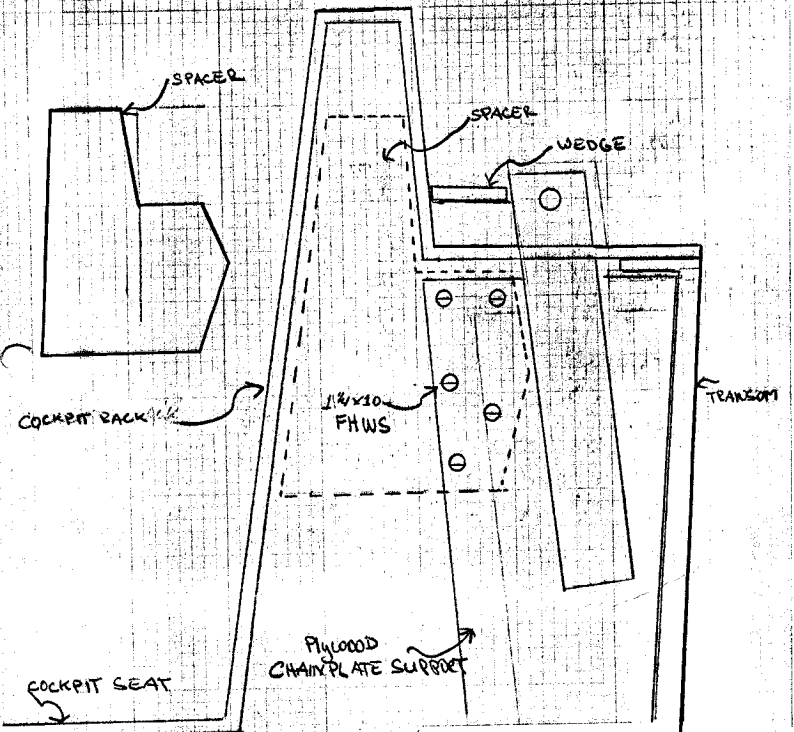


SABRE YACHTS  
BACKSTAY CHAINPLATE SUPPORT  
REPAIR INSTRUCTIONS

Attach the main halyard to one of the aft docking cleats.  
Tension the halyard to remove load from the backstay.

1. Disconnect backstay
2. Use a wedge between the chainplate and the aft edge of the cockpit, to push the chainplate support back, up against the transom. See diagram. Leave the wedge in place until installation is complete.
3. Mark where spacer is to go on the existing plywood chainplate support. Remove the blue paint, if any, in the area between the spacer, the chainplate and below the spacer. Resin will not adhere to blue paint.
4. Screw the spacer to the starboard side of the chainplate support with the 5 - 1¼" x 10" FHWS provided
5. Using a layer of 1½ oz. mat and a layer of 24 oz. roving, tape the spacer to the cockpit back on both sides of the spacer. Also, tape the spacer to the plywood chainplate support.
6. After the fiberglass is set, remove the wedge.



COCKPIT SEAT

<p><b>Sable Yachts</b> 50. CASCO, MAINE</p>	SCALE: NONE
	DATE: 10/24/77
	BY: W.M. APVD:
	DWG NO: 7/0-24